

Slocan Lake Stewardship Society
Box 171 New Denver, BC
V0G 1S0
c/o Ann Meidinger (meidingerann@gmail.com)

June 14, 2017

Subject: Columbia Basin Water Quality Monitoring Program, 2015-2016 Silverton Creek - Data Review

Lotic Environmental Ltd. (Lotic Environmental) has completed the review of data collected by the Slocan Lake Stewardship Society (SLSS) at Silverton Creek (NJSLV01) through the Columbia Basin Water Quality Monitoring Project (CBWQMP). This review included analysis of data collected in 2015 - 2016 of the four main components of the project: 1) water quality data, 2) continual temperature data, 3) hydrometric data (velocity and flow), and 4) Canadian Aquatic Bio Monitoring Network (CABIN) data. All data and initial analyses for these components were summarized by the SLSS. Lotic Environmental's objective was to conduct a quality assurance/quality control (QA/QC) review of data, compare water quality results to applicable guidelines, interpret results, and make recommendations.

1 Water Quality

Water quality data had been transposed into the master spreadsheet by the CBWQMP (see Excel attachment). Generally, the following data were collected in 2015/16:

- a. Monthly (spring through fall) - total suspended solids (TSS), nutrients, *Escherichia coli* (E. coli), dissolved chloride, and *in situ* (field measured) data. *In situ data* were dissolved oxygen (DO), temperature, specific conductivity, pH, turbidity, and air temperature.
- b. In June 2015, and again once per year in the fall (coinciding with CABIN monitoring) - in addition to data above, inorganics and metals.
- c. Once in 2016 - a duplicate and a blank sample.

1.1 Water Quality QA/QC

Water quality data were first subjected to a quality control evaluation to assess the accuracy and precision of the laboratory and field methods.

The relative percent difference (RPD) was determined for the parameters sampled in duplicate (Province of BC 2003). All but two parameters (86%) were below the alert level of 50%, indicating a high degree of precision in data collection and lab procedures. Turbidity was one of these parameters; however, a field measured and lab analysed sample were compared. Greater than normal variability would be expected when comparing these two different techniques; particularly for turbidity which can be influenced by agitation/settling. Natural variability in turbidity in the water column is also likely.

A water quality field blank was collected using laboratory issued de-ionized water. Field blank values two times greater than the reportable detection limit (RDL) were considered to be an

alert level (Province of BC 2003). All field blank data were below the alert level, indicating that samples were contaminant free and analysed with precision.

1.2 Guideline updates

A guideline is a maximum and/or a minimum value for a characteristic of water, sediment or biota, which in order to prevent specified detrimental effects from occurring, should not be exceeded (BC MoE 2017). The guidelines for the protection of aquatic life, and drinking water were updated to reflect changes since 2012, when they were last summarized for the CBWQMP. This involved updating threshold values, where applicable, and streamline the review process, by just presenting one guideline per parameter for each use category. This was done by applying the following hierarchy to guideline determination (BC MoE 2016):

- a. Use the BC Approved Water Quality Guideline (BC MoE 2017), and if one did not exist then use;
- b. BC Working Water Quality Guidelines for British Columbia (BC MoE 2015), and if one did not exist then use;
- c. The Canadian Environmental Quality Guidelines (Canadian Council of Ministers of the Environment [CCME] 2017), or Health Canada (2017).

When both a long-term (30- day average or chronic) and short-term (maximum acute) exposure guideline was available, the long-term guideline was used in the review, since sampling was assumed to have occurred under 'normal' conditions. Exceedances of these guideline thresholds were flagged to provide an understanding of the potential risks.

1.3 Water quality results

Water quality results were generally good at NJSLV01. The turbidity stood out as indicating a stable environment, since values remained low (<6 NTU) even during the spring freshet period. All but four parameters met the aquatic life and/or drinking water guidelines. Details on the exceedances are as follows:

Total Phosphorus: The total phosphorus guideline for the protection of aquatic life was not met in one out of the ten samples collected. Total phosphorus follows a framework-based approach where concentrations should not (i) exceed predefined 'trigger ranges'; and (ii) increase more than 50% over the baseline (reference) levels (CCME 2004). The trigger ranges are based on the range of phosphorus concentrations in water that define the reference productivity or trophic status¹ for the site (CCME 2004). Total phosphorus ranged from <0.005 - 0.0191 mg/L at NJSLV01. Based on this data, the baseline range for total phosphorus was determined to be 0.004 - 0.010 mg/L, representing oligotrophic conditions. This is typical of unimpacted areas and generally supports diverse and abundant aquatic life and is self-sustaining (CCME 2004). Data were evaluated against the site specific guideline, calculated as 1.5 x the upper end of the baseline range, which is equivalent to 0.015 mg/L. The exceedance occurred in September 2016, with a value of 0.0191 mg/L. The cause of the increased value is unknown, as it did not occur during the normal spring freshet period when nutrient loading into a watercourse is

¹ Trophic status refers to the productivity of a waterbody, with eutrophic systems having high productivity and oligotrophic having low. Nutrient addition, primarily phosphorus, contributes to eutrophication, which is when the waterbody's productivity is accelerated from natural (Wetzel 2001).

anticipated as a result of overland runoff. Since the exceedance was not prolonged and was only marginally higher than the guideline, aquatic life impacts are not expected. This data provides a valuable baseline for assessing long-term changes resulting from anthropogenic influences.

E coli: The E. coli drinking water guideline for raw untreated drinking water is 0 CFU/100 mL (BC MoE 2017). E. coli ranged from <1 - 15 CFU/100 mL at NJSLV01, with the guideline exceeded in 35% of samples. The criteria are based on bacteria present in human and animal feces (BC MoE 2017). Drinking water derived from surface water and shallow ground water sources should receive disinfection as a minimum treatment before human consumption (BC MoE 2017).

Total cadmium: In aquatic ecosystems, excess cadmium interferes with the uptake of calcium by organisms. In fish and aquatic invertebrates this results in cellular damage, decreases in metabolic activity, increased mortality, decreased growth, and decreased reproductive capacity and success (BC MoE 2017). In aquatic plants and algae, cadmium uptake causes adverse effects by inhibiting photosynthesis, growth, and chlorophyll synthesis (BC MoE 2017). Cadmium ranged from 0.096 - 0.205 µg/L at NJSLV01, exceeding the CCME guideline for the protection of aquatic life of 0.09 µg/L. The values increased with time. However, they were considerably lower than the CCME short term (maximum) guideline of 0.93 µg/L. In BC, the approved water quality guideline relates to the dissolved form of this metal, as this is bioavailable. Future sampling should thus include dissolved metals to better identify if there is a potential for concern to aquatic life.

Total zinc: Zinc ranks fourth among metals of the world in annual consumption, and is found in a wide array of products (BC MoE 2017). Zinc is an essential element in trace amounts for plants and animals, but can be toxic in high concentrations (BC MoE 2017). Zinc ranged from 9.8 - 15 µg/L at NJSLV01, exceeding the BC approved guideline for the protection of aquatic life of 7.5 µg/L. Zinc concentrations increased over the study period. However, values were considerably lower than the short term (maximum) guideline of 33 µg/L. Soluble or dissolved zinc is readily available for biological reactions and therefore considered most toxic (BC MoE 2017). The zinc guideline may also be interpreted in terms of the dissolved metal fraction when the total zinc concentration in the environment exceeds the guideline (BC MoE 2017). For this reason, future sampling could include dissolved metal analysis to confirm if there is a potential for impact on aquatic life.

2 Stream Temperature

Temperature plays an important role in many biological, chemical, and physical processes. The effects of temperature on aquatic organisms are listed in the technical appendix for the BC MoE approved water quality guideline (Oliver & Fidler 2001), with the following generally occurring in aquatic organisms as water temperatures increase:

- Increased cardiovascular and respiratory functions, which in turn may increase the uptake of chemical toxins.
- Oxygen demand increases, while the dissolved oxygen content of water decreases, making swimming more difficult.
- In waters where dissolved gases are supersaturated, elevated water temperatures may worsen the effects of gas bubble trauma in fish.

The BC MoE stream temperature guidelines are specified by water use (i.e., drinking water, aquatic life, irrigation/livestock, and recreation/aesthetics). The aquatic life guidelines are dependent on the fish species (mostly salmonids) found in the stream for different life stages (rearing, spawning, and incubation). Bull Trout are especially sensitive to temperature changes, therefore streams with Bull Trout present have a separate set of more rigorous guidelines. The BC MoE also sets out temperature guidelines for streams with known fish distributions (mainly salmonids other than Bull Trout), and for streams with unknown fish distributions.

Fish species known to be present in Silverton Creek include (BC MoE 2017a):

- Bull Trout (*Salvelinus confluentus*)
- Coastal Cutthroat Trout (*Oncorhynchus clarkii clarkii*)
- Kokanee (*Oncorhynchus nerka*)
- Mountain Whitefish (*Prosopium williamsoni*)
- Rainbow Trout (*Oncorhynchus mykiss*)
- Sculpin (general)

The special guidelines for streams with Bull Trout were used for reviewing the temperature data. In general, stream temperature did not exceed the maximum daily temperature of 15 °C for Bull Trout in both years sampled (Figure 1 & Figure 2), except for one day in August of 2015 when maximum temperature exceeded the guideline by 0.5 °C. The maximum daily temperature guideline reflects the optimal rearing temperatures for Bull Trout (6.0 °C – 14 °C). The water temperatures also did not exceed optimal Cutthroat rearing temperatures (7 °C – 16 °C).

Bull Trout spawning generally occurs from mid-September to late October and often is initiated when water temperatures drop below 9 °C (McPhail 2007). The maximum daily temperatures in Silverton Creek did not exceed optimal spawning temperature guidelines (i.e. a max daily temperature of 10 °C). However, it is unknown if fish spawn in the area of the temperature logger, as monitoring of spawning or potential for spawning (based on habitat including gravel size, flows, and depths) were not part of this study. Also, the eggs incubate overwinter when no temperature data is available. If spawning had occurred, the guideline for minimum temperature during incubation is 2 °C and was met during the time periods when continuous temperature data was collected.

The stream temperatures did not exceed the drinking water temperature guideline of 15 °C, except for the one occasion in August 2015, when the daily maximum temperature reached 15.5 °C. The drinking water guideline is an aesthetic objective. Temperature indirectly affects health and aesthetics through impacts on disinfection, corrosion control and formation of biofilms in the distribution system (Health Canada 2017).

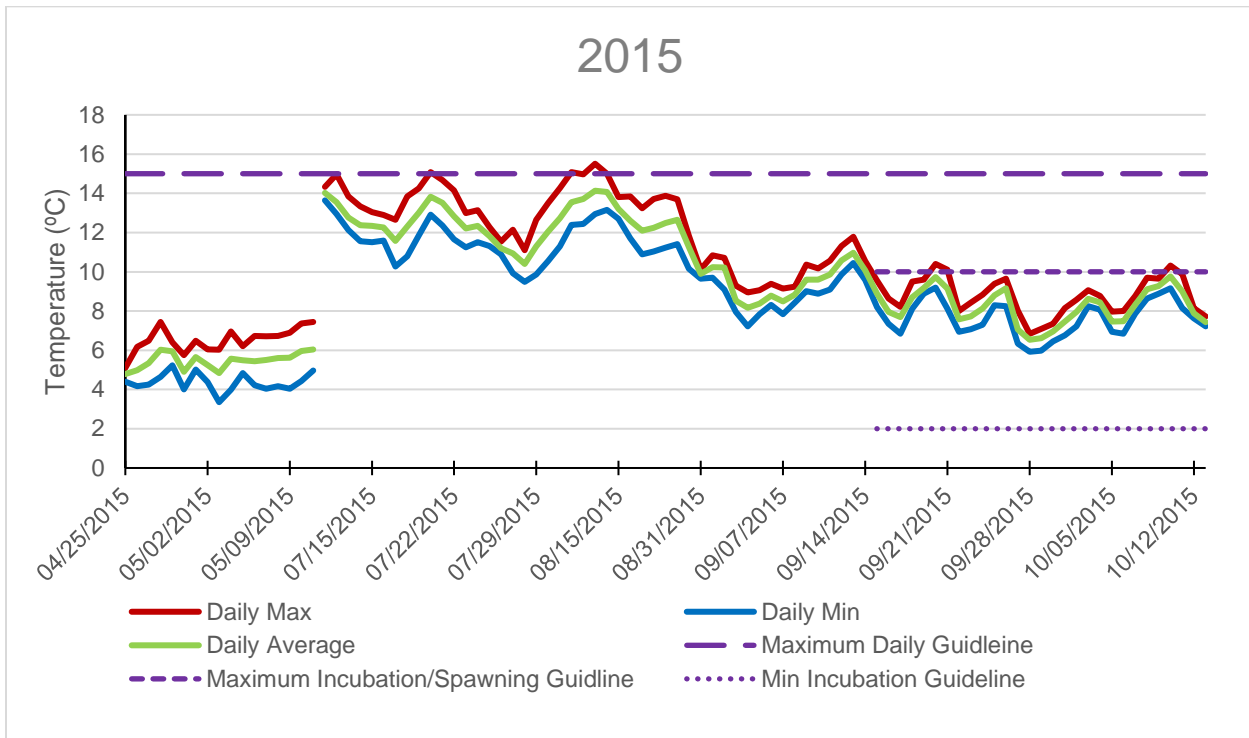


Figure 1. Stream water temperatures in Silverton Creek (site NGSLV01) from April 25 to October 13, 2015. The logger was pulled during freshet (May 11 – July 11). The long dashed purple line indicates the BC MoE guideline for aquatic life for streams with Bull Trout present. The short dashes indicate maximum daily temperature during spawning, and the dotted line indicate minimum daily water temperature during spawning and incubation.

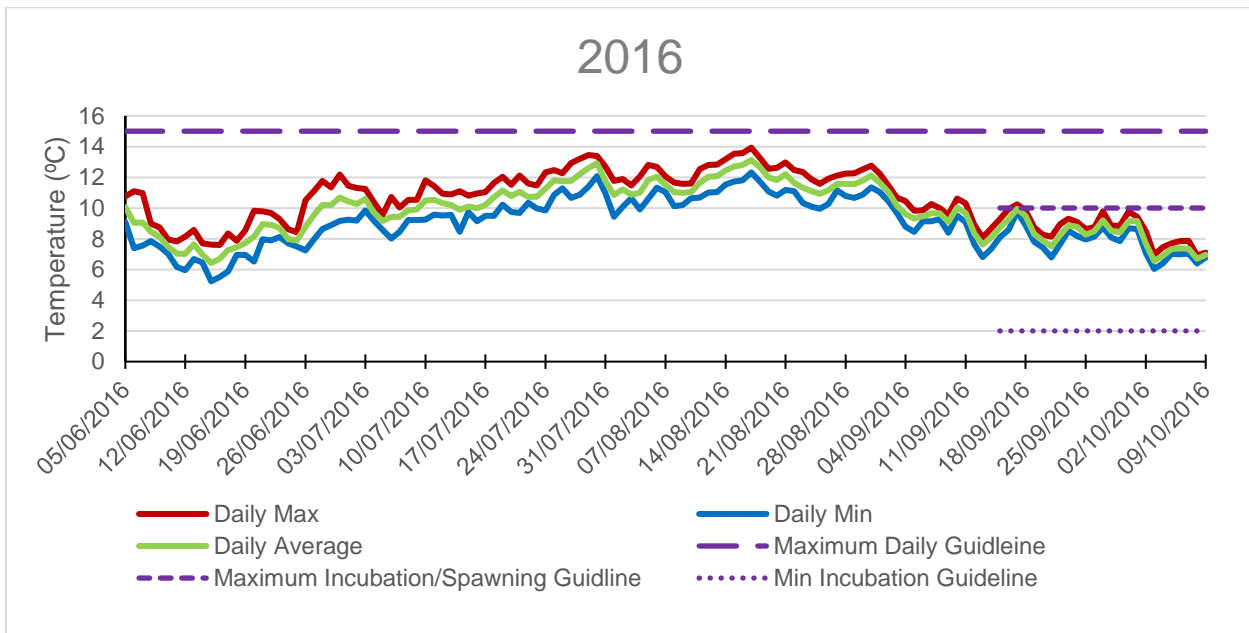


Figure 2. Stream water temperatures in Silverton Creek (site NGSLV01) from June 5 to October 9, 2016. The long dashed purple line indicates the BC MoE guideline for aquatic life for streams with Bull Trout present. The short dashes indicate maximum daily temperature during spawning, and the dotted line indicates minimum daily water temperature during spawning and incubation.

3 Hydrometric data (velocity and flow)

Stream flows play an important role in stream ecosystems, influencing aquatic species distributions, water quality (especially turbidity, dissolved oxygen content and stream temperature), physical habitat (especially substrate characteristics), and fish life history traits (e.g. spawning time). Hydrometric data on Silverton Creek was collected as both a flow and a velocity. Both measure the amount of water moving past a point. Velocity is the speed of water and is measured as a unit of distance per time. Flow, also known as discharge, measures the volume of water moving through a point in a given amount of time and is calculated by multiplying water velocity by the cross-sectional area.

The CBWQMP generally aimed to collect instantaneous velocity and flow data monthly from spring through fall. Provincial instream flow guidelines to protect aquatic ecosystems are usually set relative to natural historic flows of each stream. In order to develop these criteria, the annual hydrologic regime of the stream would need to be thoroughly detailed in a long term dataset. This would be best achieved using continuous level loggers and developing level-discharge (flow) relationships. Instantaneous flow measurements at one site cannot be directly related to fish habitat requirements, as water velocity will vary with channel morphology, and fish can swim to more suitable habitats within the stream. Nevertheless, the hydrometric data collected as part of this project is still important as it shows changes in flow patterns with time. This information can also explain changes in water quality (e.g., turbidity can increase during high flows) and biological changes such as fish/invertebrate/periphyton species population distributions.

The results show slight differences in both flow and velocity patterns between the two years sampled (Figure 3 and Figure 4). Freshet (i.e. high flows due to snowmelt and/or heavy rain) occurred April – July, followed by decreasing flows/velocity in 2015 throughout late summer/fall. Conversely, flows/velocity in 2016 increased throughout late summer/fall. There was a notable and sharp increase in flows/velocity between September and October of 2016, likely due to an increase in precipitation. Aside from October, flows and velocity in all other months measured were generally higher in 2015, compared to 2016.

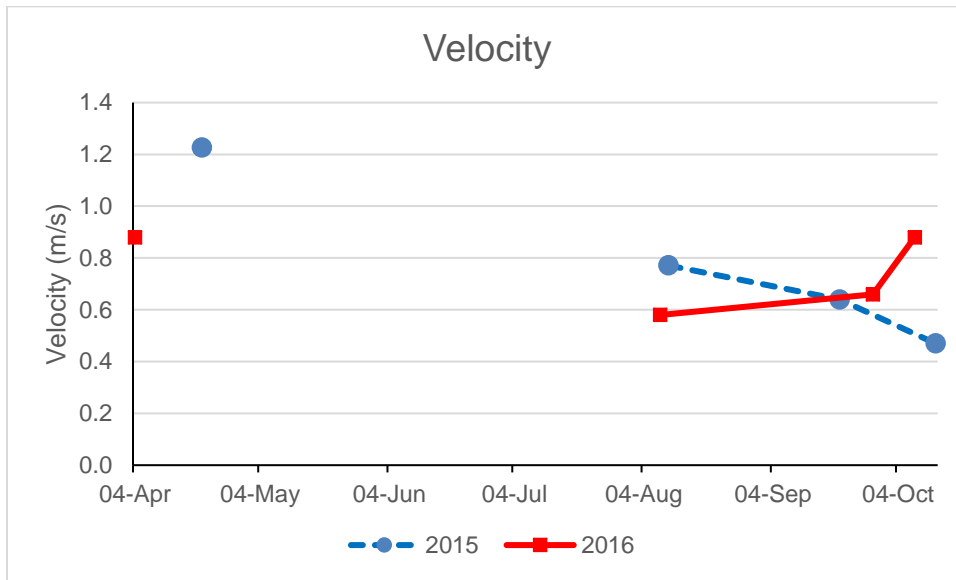


Figure 3. Water velocity at NGSLV01 (Silverton Creek) in 2015 and 2016. No measurements were taken in May – July for both years due to safety concerns during high flows.

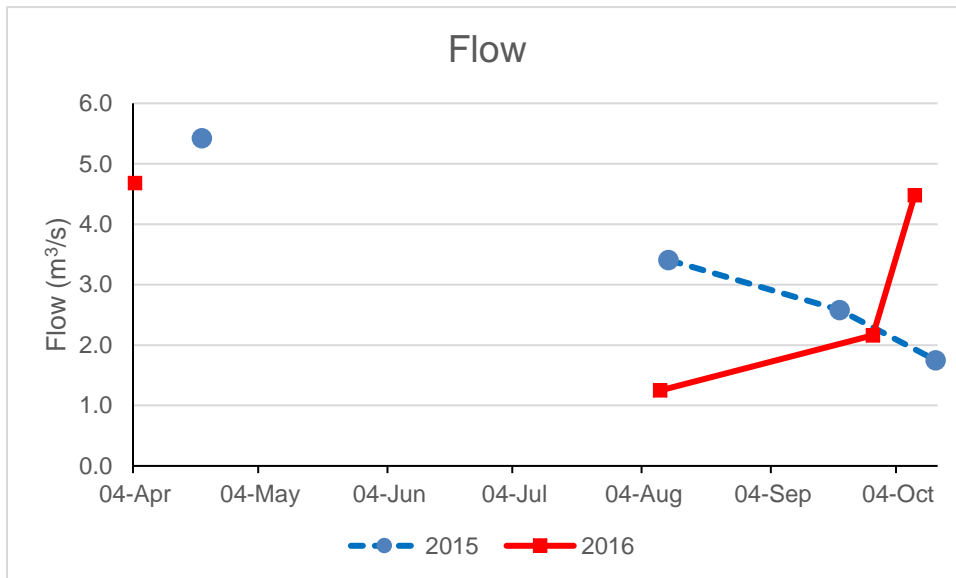


Figure 4. Water flow at NGSLV01 (Silverton Creek) in 2015 and 2016. No measurements were taken in May – July for both years due to safety concerns during high flows.

4 CABIN

CABIN data was collected following standard methods in the CABIN Field Protocols Manual (Environment Canada 2012) at NJSLV01 in the fall of 2015 and 2016. The CBWQMP completed a RCA analysis on collected CABIN data using the Analytical tools in the CABIN database. We reviewed the CABIN output, and summarized and interpreted the results.

4.1 Reference Condition Approach: BEAST Analysis and Site Assessment

The Reference Condition Approach (RCA) in CABIN is used to determine the condition of the benthic invertebrate community at the test sites (as sampled by CBWQMP groups), by comparing each site to a group of reference sites with similar environmental characteristics. The RCA in CABIN determines whether the benthic community at the test sites falls within the normal range of community variability defined by pristine sites, or sites in “reference condition”.

The Benthic Assessment of Sediment tool (BEAST) was used to predict sites to a reference group from the preliminary Okanagan-Columbia reference model. BEAST uses a classification analysis that determines the probability of test site membership to a reference group based on habitat variables (Rosenberg *et al.* 1999). Habitat variables used to predict group membership in the Okanagan-Columbia reference model include: latitude, longitude, percent of watershed with a gradient <30, percent of watershed with permanent ice cover, and average channel depth (cm).

The reference model used in the RCA analysis was the Preliminary Okanagan-Columbia Reference Model provided in the online CABIN database (Environment Canada 2010). Because the model is still considered preliminary, with some potential data gaps, caution must be exercised when interpreting RCA results. However, CABIN results can be investigated in multiple ways, including by examining the test site’s water chemistry, habitat and invertebrate community metrics. These additional assessments are used to supplement ordination assessments, and they provide essential information for evaluating the CABIN model outputs.

CABIN model hybrid multi-dimensional scaling ordination assessment was used to evaluate benthic community stress based on divergence from reference condition. This analysis places test sites into assessment bands corresponding to a stress level ranging from unstressed to severely stressed. The assessment is based on how different the benthic community at the test site is from the reference communities. In the ordination assessment, sites that are unstressed fall within the 90% confidence ellipse around the cloud of reference sites which means that their communities are similar or equivalent to reference (Rosenberg *et al.* 1999). Potentially stressed, stressed and severely stressed sites indicate mild divergence, divergence, or high divergence from reference condition (Rosenberg *et al.* 1999).

For NJSLV01, CABIN BEAST analysis determined the highest probability of reference group membership was to Group 4 in both 2015 and 2016 (probabilities found in Table 1). The site was thus compared with Reference Group 4, which includes 12 streams, mostly from the Columbia Mountain and Highlands Ecoregion. The average channel depth of Reference Group 4 is 23.6 ± 11.1 cm (SD - standard deviation), which is similar to the test sites’ average depth of 30.0 and 33.4 cm in 2015 and 2016, respectively. A comparison of other individual test site habitat attributes with the reference model means, and the ordination plots are included in the Site Assessment Reports. The CABIN model assessed NJSLV01 as potentially stressed in both 2015 and 2016.

Table 1. CABIN model assessment of the test site against reference condition as defined by the preliminary Okanagan-Columbia reference model; assessment, prediction of reference group and probability of group membership.

Site	Description	2015	2016
NJSLV01	Silverton Creek, Site 1	Potentially stressed Group 4; 72.0%	Potentially stressed Group 4; 72.3%

4.2 RIVPACS Analysis

River Invertebrate Prediction and Classification System (RIVPACS) ratios were calculated in the Analytics tools section of the CABIN database. RIVPACS is a measure that describes the presence or absence of specific taxa. The RIVPACS ratio determines the ratio of observed taxa at test sites, relative to taxa expected to be present (at a >70% probability) at reference sites. A RIVPACS ratio close to 1.00 indicates that a site is in good condition as all or most taxa expected were found at the test site. A RIVPACS ratio >1.00 can indicate community enrichment while a ratio <1.00 can indicate that a benthic community is in poor condition.

The RIVPACS ratio at NJSLV01 was 0.89 in 2015 and 0.98 in 2016. This indicates that most families expected to be present, based on the reference group, were found at the test site. In 2015 there were two families not present at the test site that were expected, and in 2016 there one family not represented.

4.3 Community Composition Metrics

Benthic community composition metrics were calculated in the CABIN database using the Analytical Tools. A collection of measures (metrics) of community richness, abundance, diversity and composition were selected to describe the test site communities and are summarized in the Site Assessment Reports. The following metrics of special interest were reviewed in further detail here (Table 2): total abundance; percent composition of Ephemeroptera (mayfly), Plecoptera (stonefly), and Trichoptera (caddisfly) orders (EPT); percent composition of Chironomidae (midges) taxa; percent composition of the two dominant taxa; and total number of taxa.

Table 2. Summary of select metrics of interest for reference and test site

Metric	Reference Group 4 (Mean +/- SD)	NJSLV01	
		2015	2016
Total abundance	587.4 ± 299.1	1185.7	950.0
% EPT taxa	87.7 ± 7.4	72.6	75.0
% Chironomidae	7.4 ± 6.4	22.9	20.9
% of 2 dominant taxa	57.9 ± 14.2	42.8	48.2
Total number of taxa	19.3 ± 3.7	21.0	23.0

Total abundance of organisms can be influenced by many factors including type of stress and the organisms involved (Rosenberg and Resh 1984). Abundance may increase due to nutrient enrichment but decrease in response to toxic effects such as metals contamination or changes

in pH, conductivity and dissolved oxygen. Total abundance at NJSLV01 (1185.7 and 950.0 organisms, respectively in 2015 and 2016), was slightly higher than the reference group mean (587.4 ± 299.1 organisms). There was no evidence of nutrient enrichment in the water quality results at the test site to cause the high values, and it is positive that the high zinc and cadmium did not appear to decrease abundance.

The percent of the community made up by individuals of any taxon, either at the family or order level, will vary depending on the taxon's tolerance to pollution, feeding strategy and habitat requirements (Rosenberg and Resh 1984). EPT orders of insects are typically indicators of good water quality. The percent EPT at the test site (72.6 and 75.0 %, respectively in 2015 and 2016) was slightly lower than the reference group (87.7 ± 7.4 %). Conversely, Chironomidae (non-biting midges), are generally tolerant of pollution. At the test site, percent Chironomidae (22.9 and 20.9 %, respectively in 2015 and 2016), were higher than the reference group (7.4 ± 6.4 %). These differences support the model output of potentially stressed.

Relative occurrence of the two most abundant taxon is a metric that can relate to impacted streams, since as diversity declines, a few taxa end up dominating the community. Opportunistic taxa that are less particular about where they live replace taxa that require special foods or particular types of physical habitat (Environment Canada 2012b). At the test site, the percent of the two dominant taxa (42.8 and 48.2 %, respectively in 2015 and 2016) were similar to the reference group (57.9 ± 14.2 %), indicating a healthy community.

Taxa richness is the total number of taxa present for a given taxonomic level. There is usually a decrease of intolerant taxa and an increase of tolerant taxa with disturbance (Environment Canada 2012b). However, overall biodiversity of a stream typically declines with disturbance (Environment Canada 2012b). Taxa richness at the test site (21 and 23 taxa) were similar to the test site (19.3 ± 13.7 taxa), also indicating a healthy community.

5 Conclusions

Overall, the water quality showed some signs of potential concern at this site, exceeding three aquatic life guidelines (total phosphorus, only once; cadmium and zinc), and one drinking water guideline (E. coli - regularly). The guideline exceedances should be reviewed further if there is concern of anthropogenic influences relating to them in the watershed. Otherwise they may simply represent normal background conditions. Stream temperatures were good in both 2015 and 2016, exceeding guidelines by only 0.5 °C on one day (August 13, 2015). Flows/velocity were high from May to July during freshet, but differed between the years from August to October. The CABIN model determination of the site being potentially stressed in 2015 and 2016 was evident, with some deviations from reference group in the metrics reviewed.

6 Recommendations

Overall, the program you are undertaking is really good for developing a baseline. Three years should provide a good picture of aquatic invertebrate health and water quality, assuming relatively representative years are captured, and there are no change in land-use during the 3 year period. This information will identify if there are water quality or benthic invertebrate changes as a result of a major disturbance. Obtaining data over a longer period, of course, would help provide an understanding of natural variance in the system over time, but we

recognize that resources are limited, and a three year period is realistic and achievable. Once baseline data has been attained, sampling should be focussed to locations experiencing ongoing development pressures.

A few specific recommendations for the Slocan Lake Stewardship Society are to:

1. Include dissolved cadmium in the water quality analysis, so results can be compared to the BC Approved Water Quality guideline that relates to the bioavailable form. This will help identify if there is a potential for concern with this metal on aquatic life.
2. Include dissolved zinc in water quality analysis as it is considered more bioavailable and toxic to aquatic organisms. This will also help identify if there is a potential for concern with this metal on aquatic life.
3. Update water quality data entered into the CABIN database for accuracy in units. In particular, we noted that 2015 NJSLV01 metal results were entered as µg/L (as provided by the lab), and that most should have been converted to mg/L.

Other general recommendations for the CBWQMP to consider, to improve the baseline monitoring program are:

1. The current level of flow monitoring is limited to providing context for CABIN and water quality results. However, continuous hydrologic monitoring would provide much more robust datasets to work with. The effort required for this is low, and would involve adding a pressure transducer and developing a rating curve. Additional ideas regarding flow data collection:
 - a. In terms of regional assessment, it would be interesting to tie these sites in with Water Survey of Canada data to develop hydrographs over longer time periods. This would allow for an assessment of regional trends, and differences in hydrologic regime between larger areas, etc.
 - b. The Water Sustainability Act has a component that is trying to mirror the Alberta Watershed Planning and Advisory Council approach. This is where stewardship actually plays a role in decision making. Because there is relatively little hydrologic monitoring in the province, water licencing in BC could benefit from these data. It could provide a basis for water allocation and for understanding trends (link with regional analysis above).
2. Sample CABIN in triplicate (three sites) in every third year, to get a sense of spatial variability in the stream.
3. It would be good if the duplicate and blank were collected annually at least once, and for all parameters (during the fall), if funding allowed.

7 Closing

The Slocan Lake Stewardship Society has completed very good monitoring work, which will be a valuable base to measure changes over time. We hope that this review provides useful information to help your organization with understanding the results of your efforts, and planning for future monitoring.

Sincerely,



Kamila Baranowska
Aquatic Ecologist (MSc, RPBio)
705.977.0306
Kamila.baranowska@lotic.co



Sherri McPherson
Senior Aquatic Biologist, (BSc, RPBio)
250.464.4564
sherri.mcpherson@lotic.co

8 References

- BC Ministry of Environment (BC MoE). 2015. British Columbia Working Water Quality Guidelines. Government of BC. Accessed at: http://www2.gov.bc.ca/assets/gov/environment/air-land-water/water/waterquality/wqgs-wqos/bc_env_working_water_quality_guidelines.pdf
- BC Ministry of Environment (BC MoE). 2016. *Environmental Management Act* Authorizations, Technical Guidance 4: Annual Reporting Under the Environmental Management Act. Version 1.3. Accessed at: http://www2.gov.bc.ca/assets/gov/environment/waste-management/industrial-waste/industrial-waste/mining-smelt-energy/annual_reporting_guidance_for_mines.pdf
- BC Ministry of Environment (BC MoE). 2017. British Columbia Approved Water Quality Guidelines. Accessed at: <http://www2.gov.bc.ca/gov/content/environment/air-land-water/water/water-quality/water-quality-guidelines/approved-water-quality-guidelines>
- BC Ministry of Environment (BC MoE). 2017a. Habitat Wizard mapping tool. Available: <http://maps.gov.bc.ca/ess/sv/habwiz/>.
- Canadian Council of Ministers of the Environment (CCME). 2017. Canadian Water and Sediment Quality Guidelines for the Protection of Aquatic Life – Summary Table. Accessed at: <http://st-ts.ccme.ca/en/index.html> .
- CCME. 2004. Canadian water quality guidelines for the protection of aquatic life: Phosphorus: Canadian Guidance Framework for the Management of Freshwater Systems. In: Canadian environmental quality guidelines, 2004, Canadian Council of Ministers of the Environment, Winnipeg.
- Environment Canada. 2012. Canadian Aquatic Biomonitoring Network: Wadeable Streams Field Manual. Accessed at: <http://ec.gc.ca/Publications/default.asp?lang=En&xml=C183563B-CF3E-42E3-9A9E-F7CC856219E1>
- Environment Canada 2012b. CABIN Module 3 – sample processing and introduction to taxonomy and benthic macroinvertebrates.
- Health Canada. 2017. Guidelines for Canadian Drinking Water Quality. Accessed at: http://www.hc-sc.gc.ca/ewh-semt/pubs/water-eau/sum_guide-res_recom/index-eng.php .
- Province of BC. 2003. British Columbia field sampling manual: 2003- for continuous monitoring and collection of air, air emission, water, wastewater, soil sediment and biological samples. Available at: http://www2.gov.bc.ca/assets/gov/environment/research-monitoring-and-reporting/monitoring/emre/field_sample_man2013.pdf.
- McPhail, J.D. 2007. The freshwater fishes of British Columbia. The University of Alberta Press. Edmonton, Alberta. 620 p.
- Oliver G.G., and L.E. Fidler. 2001. Towards a Water Quality Guideline for Temperature in the Province of British Columbia. Prepared by Aspen Applied Sciences Ltd. for the B.C. Ministry of Environment, Lands, and Parks. 54 pp + appendices.

- Rosenberg, D.M. and Resh, V.H. 1993. Freshwater Biomonitoring and Benthic Macroinvertebrates. Chapman and Hall, New York. pp.199
- Rosenberg, D.M., T.B. Reynoldson and V.H. Resh. 1999. Establishing reference conditions for benthic invertebrate monitoring in the Fraser River Catchment British Columbia, Canada. Fraser River Action Plan, Environment Canada, Vancouver BC Accessed at: <http://www.rem.sfu.ca/FRAP/9832.pdf>
- Wetzel, R.G. 2001. Limnology – Lake and River Ecosystems (third edition). Academic Press, San Diego, USA. 1006 pp.