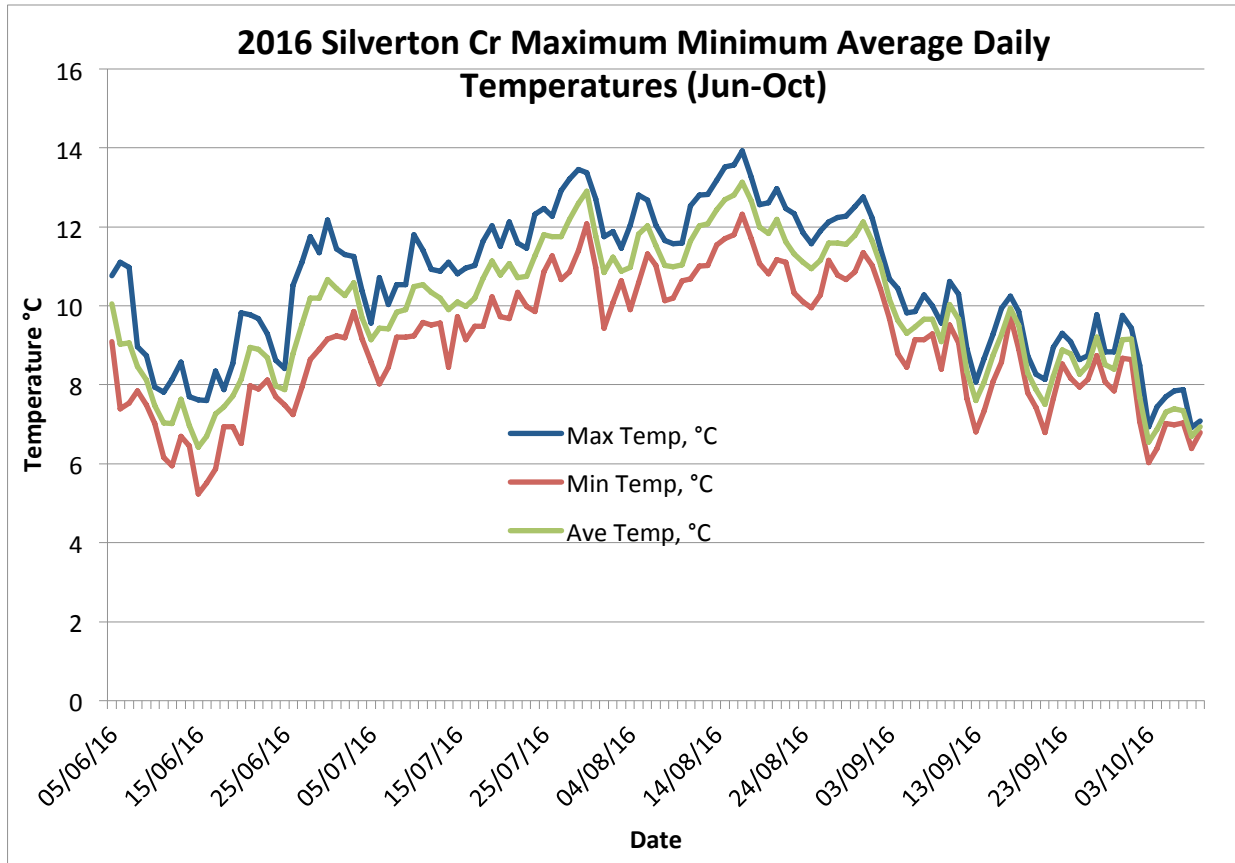


2016 Silverton Cr Maximum, Minimum and Average Daily Temperature June-October 2016



Descriptive Statistics

Average	9.9	Std Dev	1.7
Maximum	10.6	Std Dev	1.8
Minimum	6.4	Std Dev	1.6

#	Date Time, GMT-07:00	Date	Max Temp, °C	Min Temp, °C	Ave Temp, °C
1	05/06/16 00:00:00	05/06/16	10.761	9.089	10.045
2	06/06/16 00:00:00	06/06/16	11.102	7.393	9.025
3	07/06/16 00:00:00	07/06/16	10.98	7.544	9.055
4	08/06/16 00:00:00	08/06/16	8.965	7.845	8.453
5	09/06/16 00:00:00	09/06/16	8.742	7.494	8.122
6	10/06/16 00:00:00	10/06/16	7.945	7.015	7.479
7	11/06/16 00:00:00	11/06/16	7.82	6.153	7.038
8	12/06/16 00:00:00	12/06/16	8.145	5.949	7.011
9	13/06/16 00:00:00	13/06/16	8.568	6.687	7.629
10	14/06/16 00:00:00	14/06/16	7.695	6.458	6.975

11	15/06/16 00:00:00	15/06/16	7.619	5.231	6.417
12	16/06/16 00:00:00	16/06/16	7.594	5.514	6.692
13	17/06/16 00:00:00	17/06/16	8.344	5.872	7.262
14	18/06/16 00:00:00	18/06/16	7.87	6.94	7.439
15	19/06/16 00:00:00	19/06/16	8.543	6.94	7.713
16	20/06/16 00:00:00	20/06/16	9.829	6.509	8.144
17	21/06/16 00:00:00	21/06/16	9.78	7.97	8.946
18	22/06/16 00:00:00	22/06/16	9.682	7.895	8.898
19	23/06/16 00:00:00	23/06/16	9.287	8.12	8.689
20	24/06/16 00:00:00	24/06/16	8.618	7.695	7.979
21	25/06/16 00:00:00	25/06/16	8.419	7.494	7.881
22	26/06/16 00:00:00	26/06/16	10.516	7.242	8.779
23	27/06/16 00:00:00	27/06/16	11.102	7.945	9.532
24	28/06/16 00:00:00	28/06/16	11.759	8.643	10.199
25	29/06/16 00:00:00	29/06/16	11.346	8.891	10.201
26	30/06/16 00:00:00	30/06/16	12.171	9.163	10.673
27	01/07/16 00:00:00	01/07/16	11.443	9.238	10.432
28	02/07/16 00:00:00	02/07/16	11.297	9.188	10.266
29	03/07/16 00:00:00	03/07/16	11.248	9.854	10.589
30	04/07/16 00:00:00	04/07/16	10.369	9.163	9.69
31	05/07/16 00:00:00	05/07/16	9.558	8.568	9.148
32	06/07/16 00:00:00	06/07/16	10.712	8.02	9.435
33	07/07/16 00:00:00	07/07/16	10.026	8.444	9.419
34	08/07/16 00:00:00	08/07/16	10.541	9.213	9.843
35	09/07/16 00:00:00	09/07/16	10.541	9.213	9.9
36	10/07/16 00:00:00	10/07/16	11.807	9.238	10.483
37	11/07/16 00:00:00	11/07/16	11.419	9.583	10.532
38	12/07/16 00:00:00	12/07/16	10.932	9.509	10.334
39	13/07/16 00:00:00	13/07/16	10.883	9.558	10.2
40	14/07/16 00:00:00	14/07/16	11.102	8.444	9.897
41	15/07/16 00:00:00	15/07/16	10.81	9.731	10.098
42	16/07/16 00:00:00	16/07/16	10.956	9.139	9.986
43	17/07/16 00:00:00	17/07/16	11.029	9.485	10.201
44	18/07/16 00:00:00	18/07/16	11.637	9.485	10.703
45	19/07/16 00:00:00	19/07/16	12.025	10.222	11.136
46	20/07/16 00:00:00	20/07/16	11.516	9.731	10.784
47	21/07/16 00:00:00	21/07/16	12.122	9.682	11.063
48	22/07/16 00:00:00	22/07/16	11.589	10.345	10.719
49	23/07/16 00:00:00	23/07/16	11.467	9.977	10.74
50	24/07/16 00:00:00	24/07/16	12.316	9.854	11.264
51	25/07/16 00:00:00	25/07/16	12.461	10.858	11.808
52	26/07/16 00:00:00	26/07/16	12.268	11.273	11.746
53	27/07/16 00:00:00	27/07/16	12.92	10.663	11.759
54	28/07/16 00:00:00	28/07/16	13.209	10.858	12.193
55	29/07/16 00:00:00	29/07/16	13.449	11.394	12.601
56	30/07/16 00:00:00	30/07/16	13.377	12.074	12.908

57	31/07/16 00:00:00	31/07/16	12.703	10.98	11.771
58	01/08/16 00:00:00	01/08/16	11.759	9.435	10.841
59	02/08/16 00:00:00	02/08/16	11.88	10.075	11.226
60	03/08/16 00:00:00	03/08/16	11.467	10.638	10.875
61	04/08/16 00:00:00	04/08/16	12.05	9.903	10.981
62	05/08/16 00:00:00	05/08/16	12.799	10.59	11.819
63	06/08/16 00:00:00	06/08/16	12.678	11.321	12.024
64	07/08/16 00:00:00	07/08/16	12.05	11.029	11.52
65	08/08/16 00:00:00	08/08/16	11.662	10.124	11.028
66	09/08/16 00:00:00	09/08/16	11.565	10.198	10.995
67	10/08/16 00:00:00	10/08/16	11.589	10.638	11.034
68	11/08/16 00:00:00	11/08/16	12.534	10.687	11.636
69	12/08/16 00:00:00	12/08/16	12.799	11.005	12.025
70	13/08/16 00:00:00	13/08/16	12.823	11.029	12.079
71	14/08/16 00:00:00	14/08/16	13.185	11.54	12.439
72	15/08/16 00:00:00	15/08/16	13.522	11.71	12.693
73	16/08/16 00:00:00	16/08/16	13.57	11.807	12.803
74	17/08/16 00:00:00	17/08/16	13.93	12.316	13.124
75	18/08/16 00:00:00	18/08/16	13.257	11.71	12.659
76	19/08/16 00:00:00	19/08/16	12.558	11.078	11.987
77	20/08/16 00:00:00	20/08/16	12.606	10.81	11.83
78	21/08/16 00:00:00	21/08/16	12.968	11.175	12.19
79	22/08/16 00:00:00	22/08/16	12.461	11.102	11.629
80	23/08/16 00:00:00	23/08/16	12.34	10.32	11.321
81	24/08/16 00:00:00	24/08/16	11.856	10.1	11.095
82	25/08/16 00:00:00	25/08/16	11.565	9.952	10.934
83	26/08/16 00:00:00	26/08/16	11.904	10.271	11.148
84	27/08/16 00:00:00	27/08/16	12.122	11.151	11.584
85	28/08/16 00:00:00	28/08/16	12.243	10.785	11.582
86	29/08/16 00:00:00	29/08/16	12.268	10.663	11.552
87	30/08/16 00:00:00	30/08/16	12.509	10.858	11.782
88	31/08/16 00:00:00	31/08/16	12.751	11.346	12.125
89	01/09/16 00:00:00	01/09/16	12.219	11.029	11.637
90	02/09/16 00:00:00	02/09/16	11.443	10.418	11.037
91	03/09/16 00:00:00	03/09/16	10.687	9.682	10.16
92	04/09/16 00:00:00	04/09/16	10.443	8.792	9.622
93	05/09/16 00:00:00	05/09/16	9.829	8.444	9.308
94	06/09/16 00:00:00	06/09/16	9.854	9.139	9.471
95	07/09/16 00:00:00	07/09/16	10.271	9.139	9.655
96	08/09/16 00:00:00	08/09/16	10.001	9.287	9.661
97	09/09/16 00:00:00	09/09/16	9.558	8.394	9.09
98	10/09/16 00:00:00	10/09/16	10.614	9.509	10.036
99	11/09/16 00:00:00	11/09/16	10.296	9.064	9.668
100	12/09/16 00:00:00	12/09/16	8.916	7.645	8.338
101	13/09/16 00:00:00	13/09/16	8.07	6.813	7.606
102	14/09/16 00:00:00	14/09/16	8.668	7.343	8.077

103	15/09/16 00:00:00	15/09/16	9.287	8.095	8.748
104	16/09/16 00:00:00	16/09/16	9.928	8.568	9.271
105	17/09/16 00:00:00	17/09/16	10.247	9.731	9.944
106	18/09/16 00:00:00	18/09/16	9.854	8.891	9.499
107	19/09/16 00:00:00	19/09/16	8.742	7.795	8.306
108	20/09/16 00:00:00	20/09/16	8.27	7.419	7.884
109	21/09/16 00:00:00	21/09/16	8.145	6.788	7.512
110	22/09/16 00:00:00	22/09/16	8.941	7.645	8.222
111	23/09/16 00:00:00	23/09/16	9.312	8.519	8.876
112	24/09/16 00:00:00	24/09/16	9.089	8.17	8.79
113	25/09/16 00:00:00	25/09/16	8.643	7.945	8.272
114	26/09/16 00:00:00	26/09/16	8.742	8.145	8.501
115	27/09/16 00:00:00	27/09/16	9.78	8.742	9.202
116	28/09/16 00:00:00	28/09/16	8.841	8.07	8.504
117	29/09/16 00:00:00	29/09/16	8.841	7.845	8.398
118	30/09/16 00:00:00	30/09/16	9.756	8.668	9.146
119	01/10/16 00:00:00	01/10/16	9.435	8.643	9.157
120	02/10/16 00:00:00	02/10/16	8.494	7.066	7.682
121	03/10/16 00:00:00	03/10/16	6.94	6.026	6.556
122	04/10/16 00:00:00	04/10/16	7.444	6.382	6.879
123	05/10/16 00:00:00	05/10/16	7.695	7.015	7.316
124	06/10/16 00:00:00	06/10/16	7.845	6.99	7.385
125	07/10/16 00:00:00	07/10/16	7.87	7.041	7.348
126	08/10/16 00:00:00	08/10/16	6.914	6.382	6.696
127	09/10/16 00:00:00	09/10/16	7.091	6.788	6.94

